

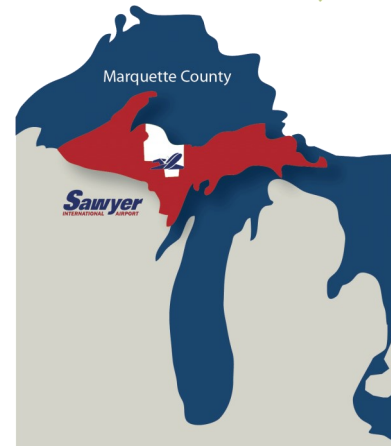
AVAILABLE SITES

Contact: Vikki Kulju, (906) 346-3333 or vikki@telkite.com

December 2013

Manufacturing Sites

Sawyer International Airport, Marquette County and Telkite Enterprises LLC are offering four different sites for your client's consideration. All of the sites are located either adjacent the Sawyer International Airport's 12,300 foot runway or within close proximity. Formerly the K.I. Sawyer Air Force Base, the community has re-developed the park into an industrial, aviation and technology park featuring companies like Biogenic Reagents (biomass and alternative fuel); Frontier Medical Devices; Argonics High Performance Polyurethane; P&L Tooling; Potlatch Lumber, Adler Lumber, Global Response Call Center, Dice Corporation and more. CN Rail serves the site with a community loading area. You will notice that some of the sites could be combined to exceed your client's requirements. Rail exists on one site and additionally a spur could potentially be developed to some of the sites. Each site is identified in the attached pages as Sites 1-4.



Sawyer International Airport (SAW)

Boasting the longest single-runway in the State of Michigan at 12,366 ft, Sawyer is home to beautiful, well-maintained hangars and ancillary buildings; Boreal Aviation, its Fixed Base Operator; and nearby MOAs. As a converted Air Force Bomber base, it has accommodated all sizes of aircraft, including: Air Force 1 on two separate occasions, Boeing 747s, an Antonov 124 cargo plane; Russian IL-78 Tanker Jet; and, most recently, the Boeing 747-8.



The airport operates 365 days per year with current operation hours of 0400 - 0100 Eastern time. Boreal has an existing DOD contract and offers vast repair services. The Airport is located 15 minutes from downtown Marquette, the regional capital of Michigan's Upper Peninsula. While Delta and American Airlines offer a commercial air service to Detroit and Chicago, the skies remain uncongested and the runway access clear. This enables any aviation-related company to have efficient and cost-effective operations.



- 12,366' long x 150' wide; runway designations 1/19
- The Airport is opened 24-7 with an FAA Contract Control Tower operating 0600-2200 eastern time zone.
- ILS approach on runway 1 with 200 - 1/2 minimums.
- Boreal Aviation, Fixed Base Operator with 80,000 gallons jet fuel farm
- Newly Renovated Hangars
- Commercial Air Service Provided by American Airlines and Delta Connect
- Existing engine test cell
- Mega-Hangar Plans Underway
- Paint Booth Plans Underway
- NMU A&P School
- DOD Fuel Contract
- Preliminary plans and cost estimates on 78,000 sf hangar and 32,000 sf paint booth and 30,000 sf hangar tail expansion.

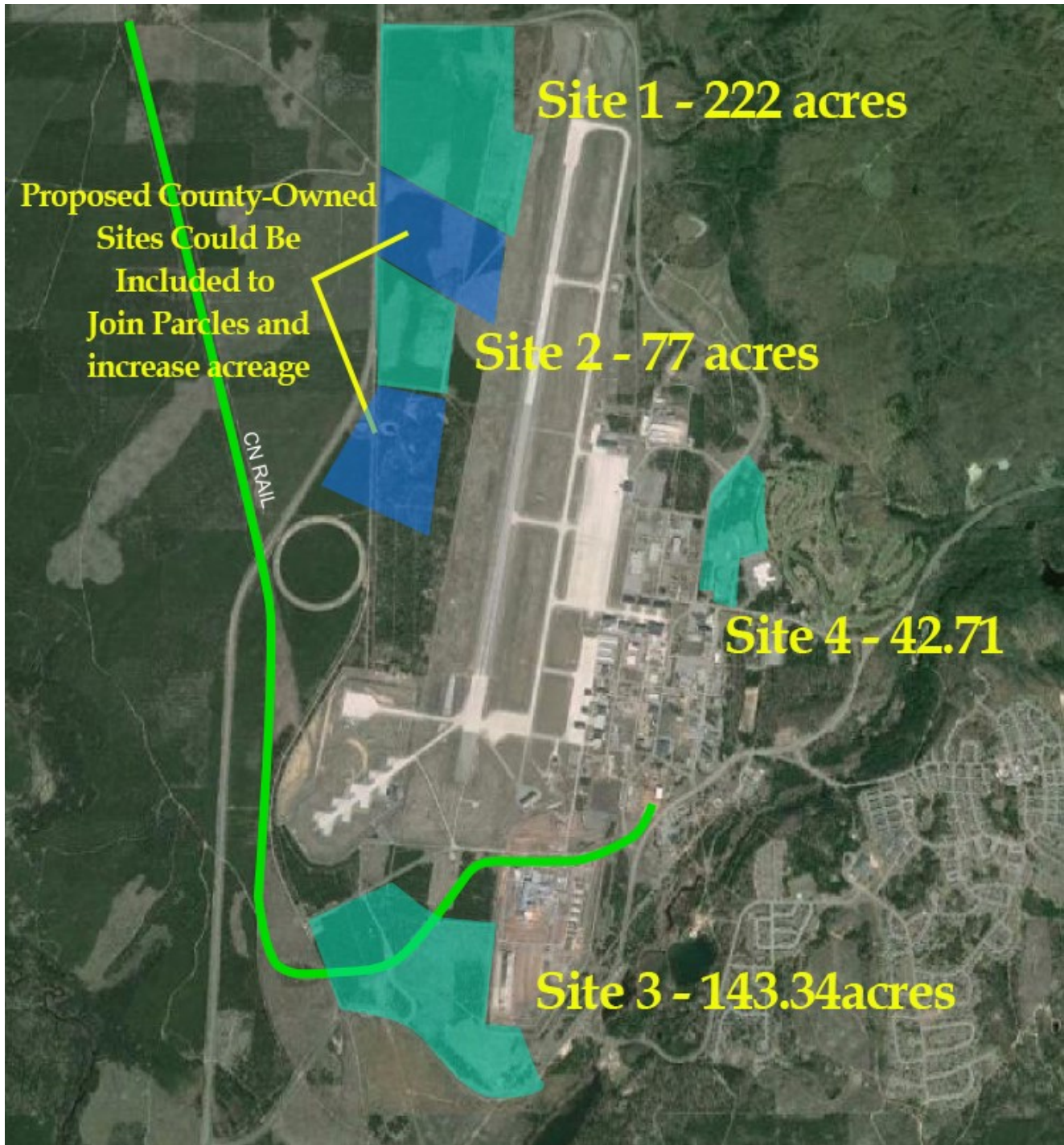


Largest American Made Plane Lands at Sawyer Int'l Airport

SITE OPTIONS

Contact: Vikki Kulju, (906) 346-3333 or vikki@telkite.com

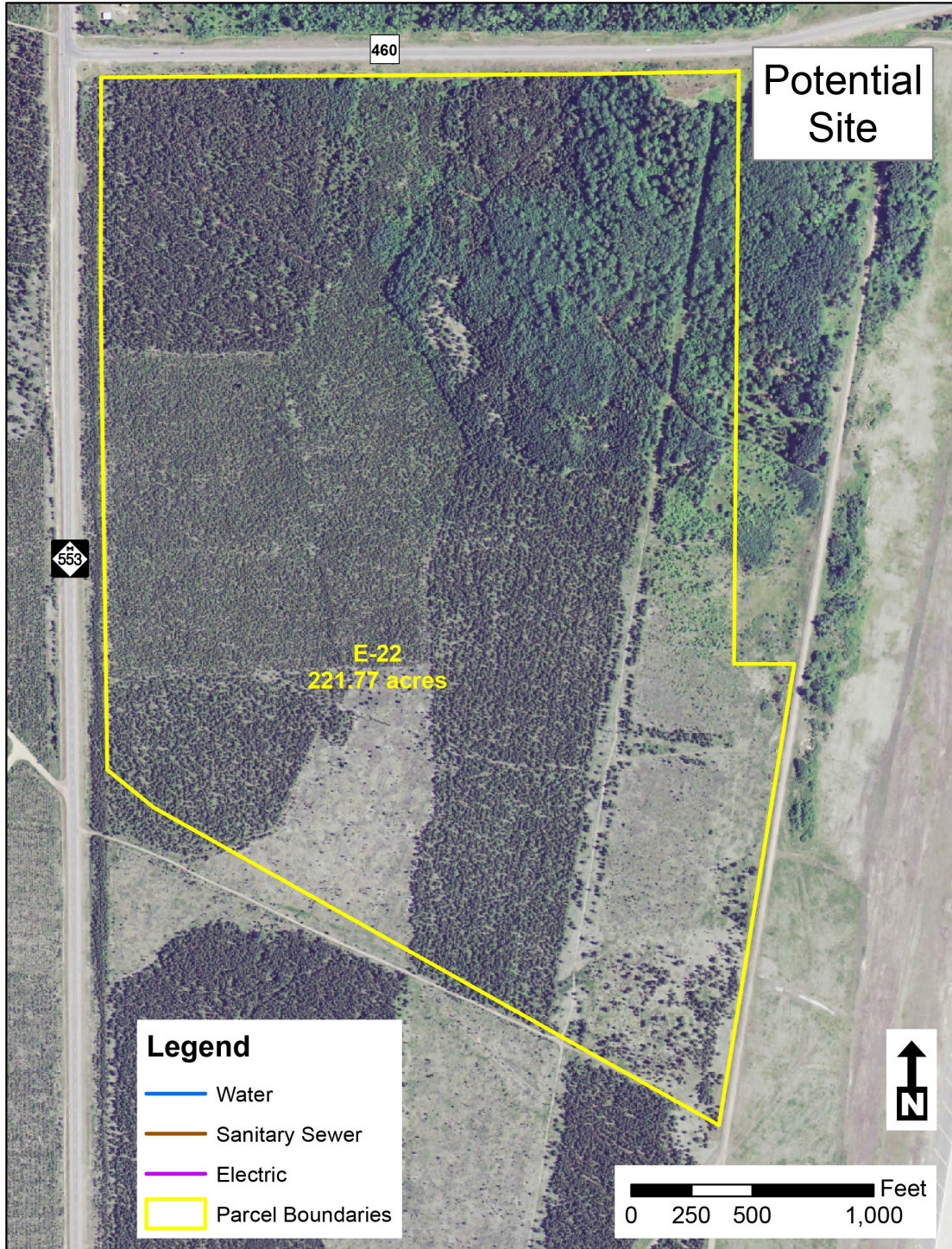
December 2013



PARCEL E22—221.77 ACRES

Contact: Vikki Kulju, (906) 346-3333 or vikki@telkite.com

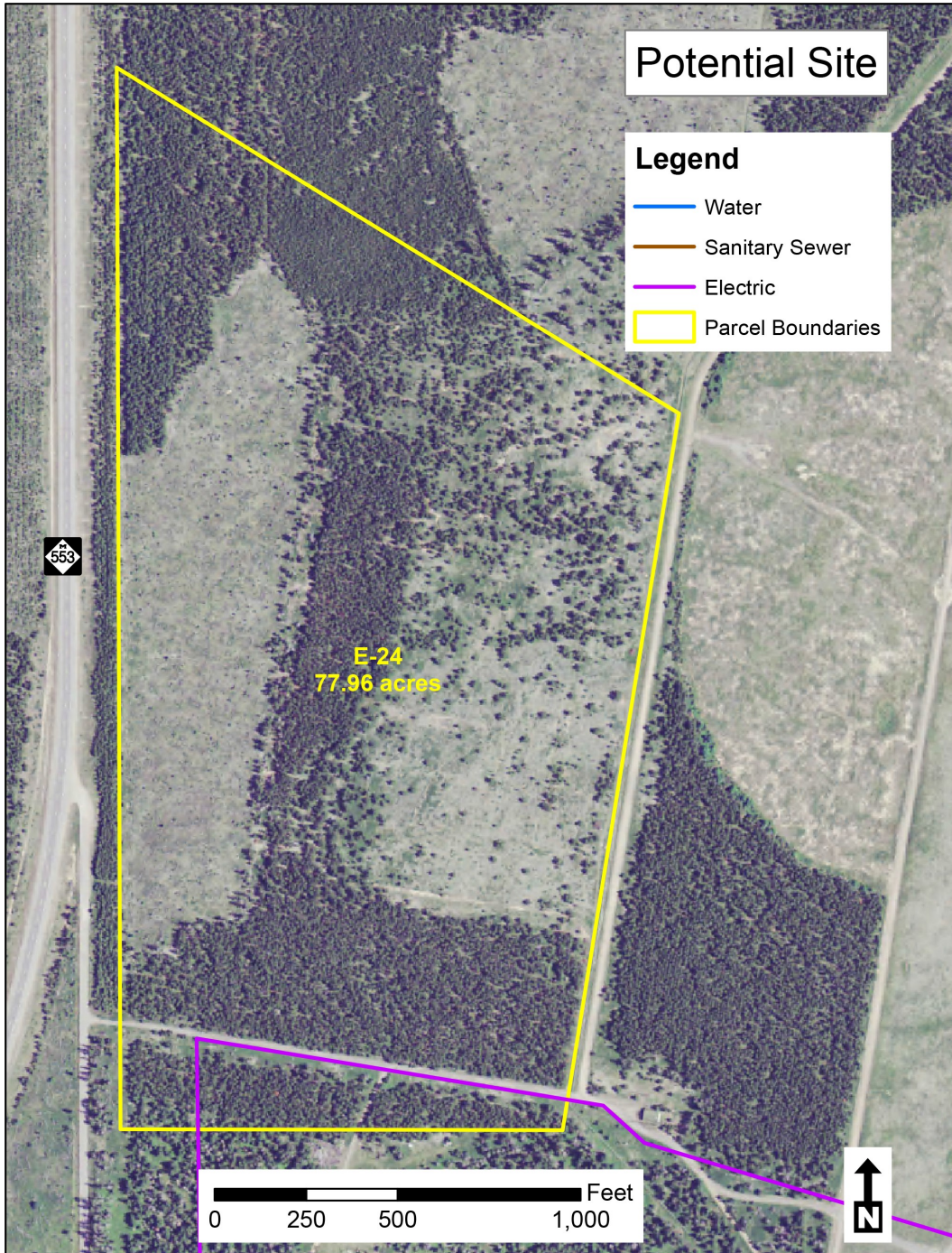
December 2013



PARCEL E24—77.96 ACRES

Contact: Vikki Kulju, (906) 346-3333 or vikki@telkite.com

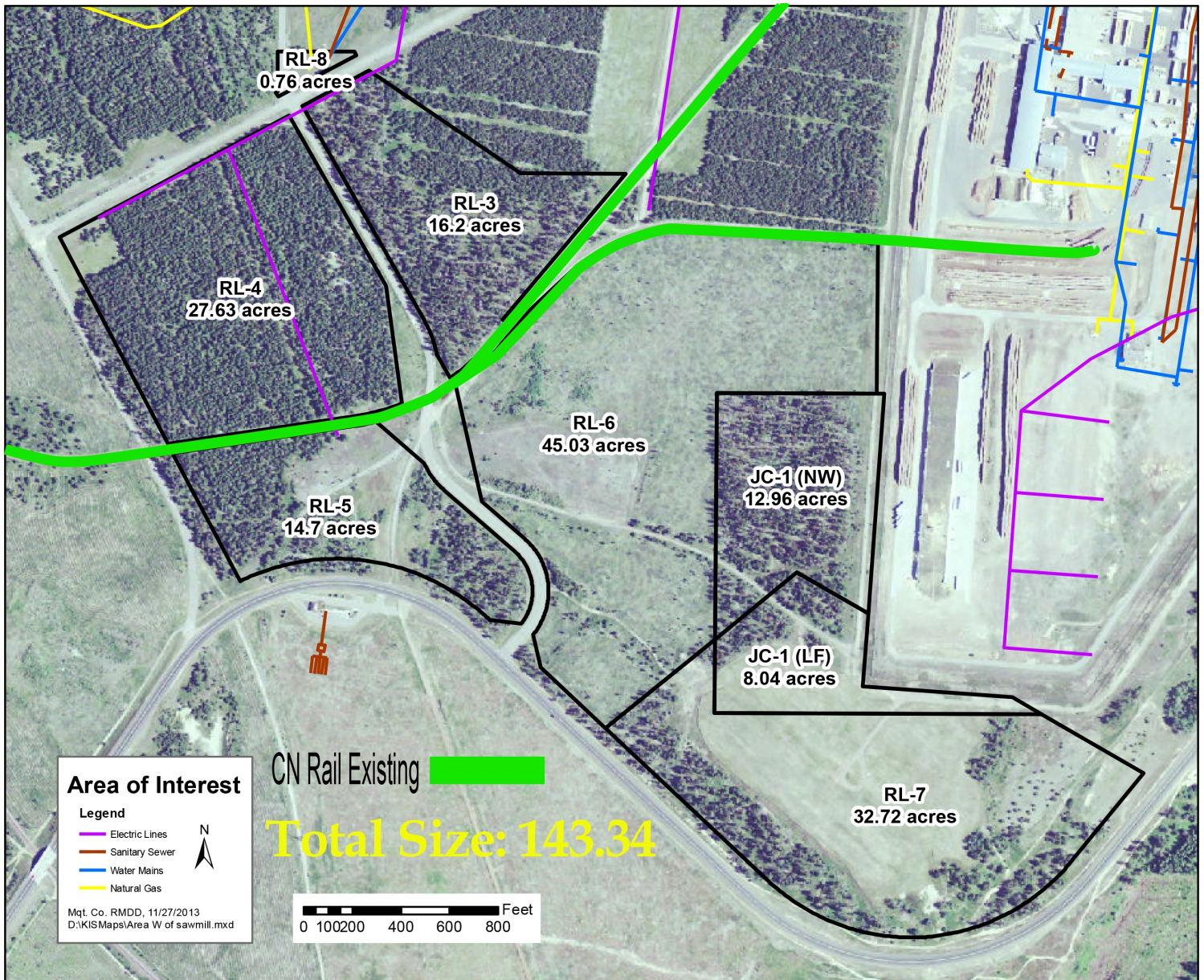
December 2013



RL PROPERTIES 143.34 ACRES

Contact: Vikki Kulju, (906) 346-3333 or vikki@telkite.com

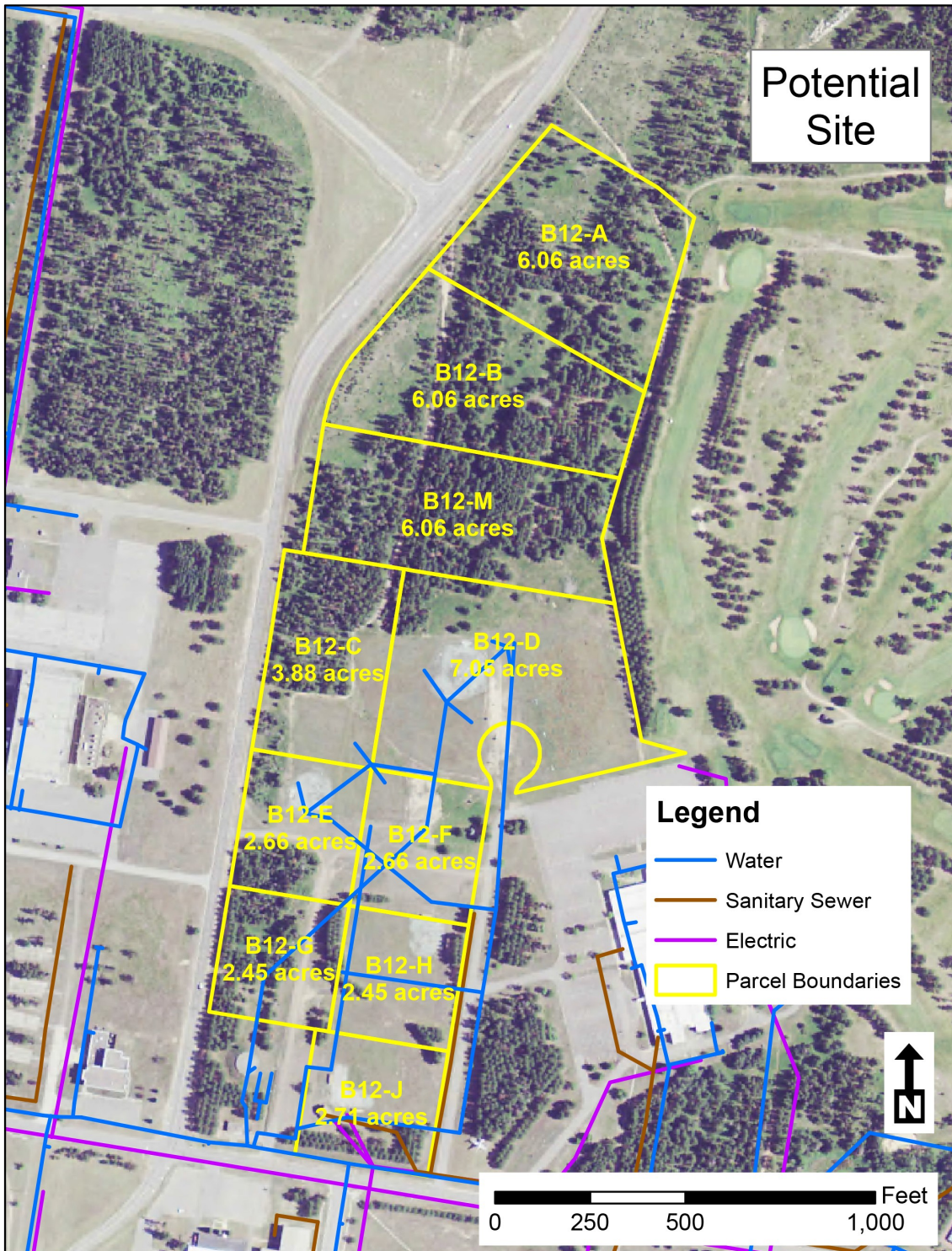
December 2013



B BLOCK— 42.71 ACRES

Contact: Vikki Kulju, (906) 346-3333 or vikki@telkite.com

December 2013



ROAD & RAIL

Contact: Vikki Kulju, (906) 346-3333 or vikki@telkite.com

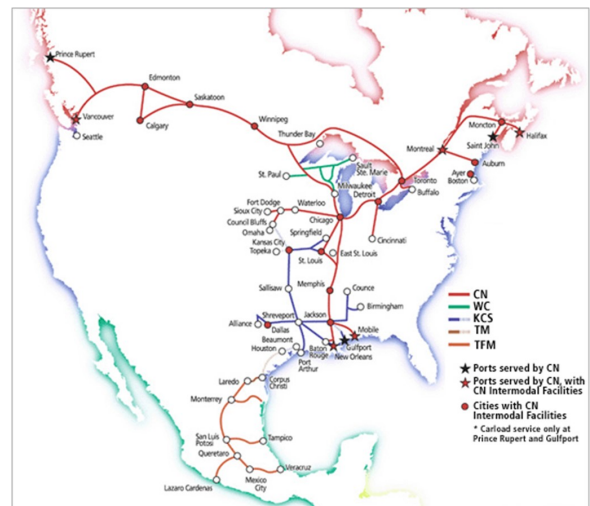
December 2013

Highway, Road, Rail Access

M-553 fronts Sites 1 & 2 and M-94 fronts Site 3. CN Rail current splits Site 3 and a community loading/unloading area exists. The potential exists for a rail spur to accommodate Sites 1 & 2.

CN currently provides regular service to Potlatch Lumber located to the East of Site 3.

At the time we prepared this information, costs and additional specific information were not available.



PORTS

Contact: Vikki Kulju, (906) 346-3333 or vikki@telkite.com

December 2013

Port Access

Deep sea ports are available in Lake Superior (to the North approximately 15 minute drive) and Lake Michigan (to the South approximately a 45 minute drive) of the sites. Both sites are classified as “small” harbor “Class C” sites and Escanaba does offer rail. Additional information will be provided once we make the short list.

http://www.worldportsource.com/ports/portCall/USA_MI_Port_of_Marquette_3598.php

http://www.worldportsource.com/ports/portCall/USA_MI_Port_of_Escanaba_3740.php



Iron ore docks at Marquette, Mich., on Lake Superior.
Photo credit Christine Manninen, Great Lakes Commission



U.S. Army Corps of Engineers, Detroit District

